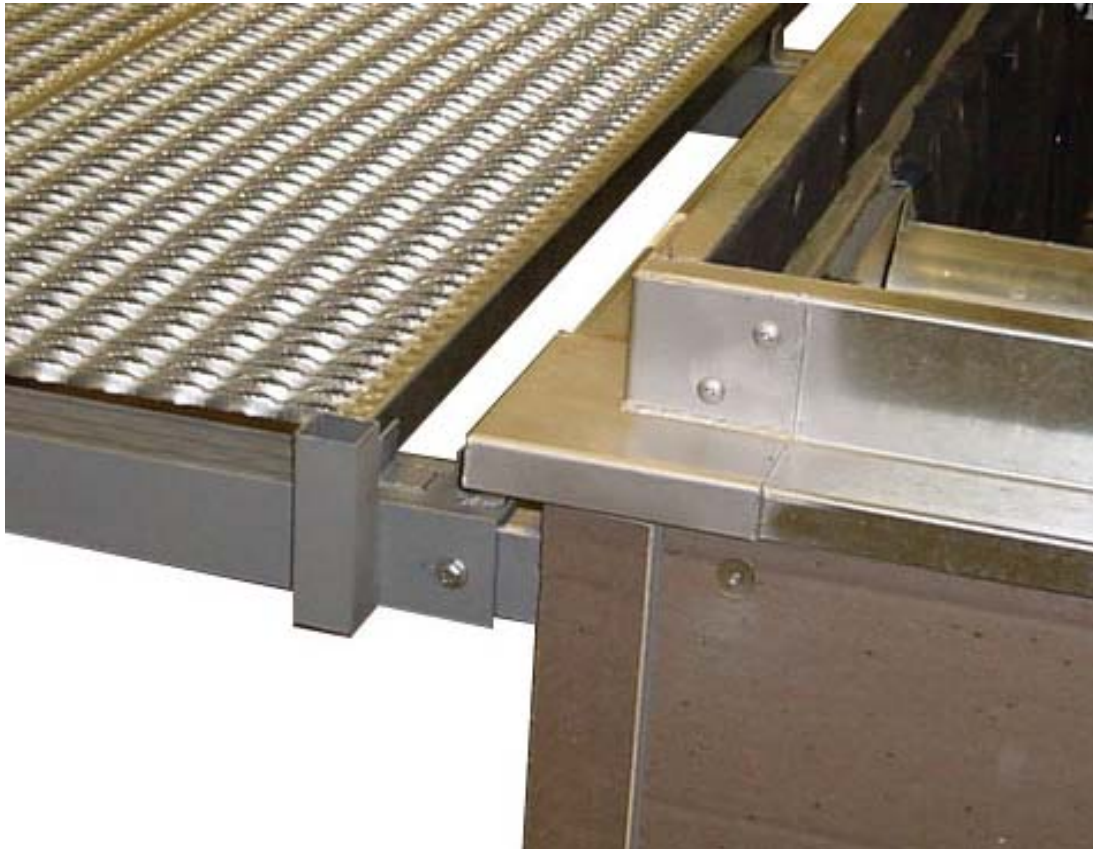




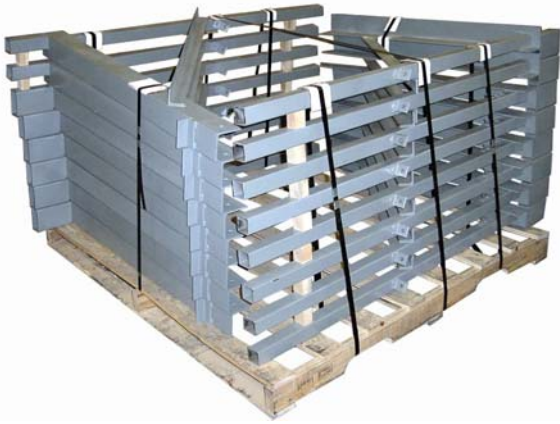
**Novia**  
1 Northwestern Drive  
Salem, NH 03079  
603-898-8600  
Fax: 603-898-2755  
www.cp-novia.com

# **Catwalk Installation Instructions**

**Date: 6/16/17**  
**Supersedes: 4/23/09**



**Novia - A Division of Carpenter & Paterson**  
1 Northwestern Drive  
Salem, NH 03079  
(603) 898-8600



### **Shipping**

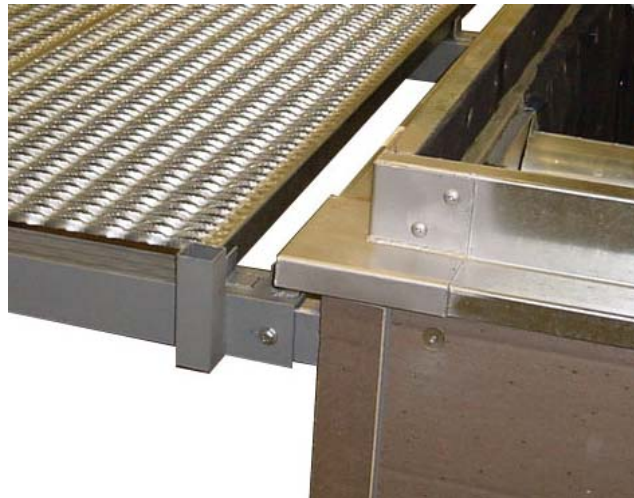
- Catwalks will be shipped knocked down on pallets for field assembly.



### **Install Joist/ Leg Assembly**

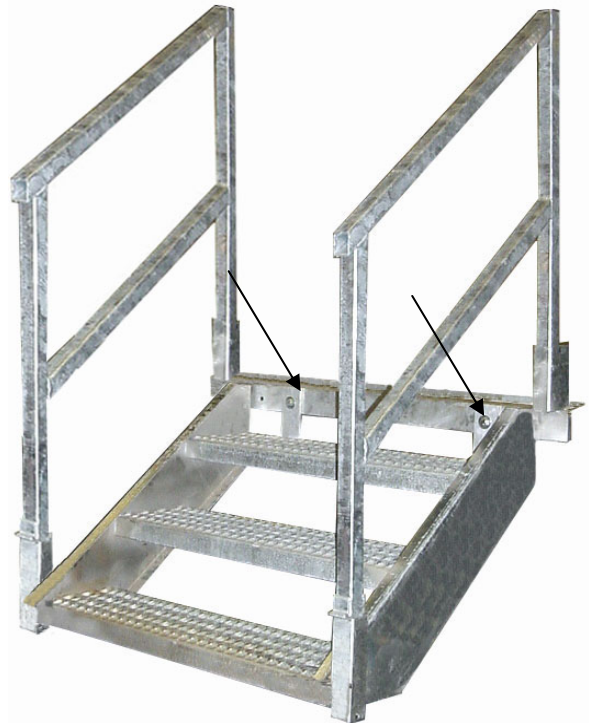
- [1] Slip angle joist over tube steel stub out on curb and fasten with 3/8" x 2-1/2" hex bolt. Continue attaching joist assemblies until all joists are in place
- [2] There are various means of supporting the outboard leg. Above is a manufactured foot for mounting directly on top of the roofing membrane. Refer to shop drawings for the particular technique used on this project.
- *Install all other bolt-on cross braces as shown on the shop drawings*

*Instructions in italics—may not pertain to all catwalks.*



### **Install Planks**

- [1] Slip planks onto joists as shown on the Key in the shipping package. When planks break between joists, connection welded tabs are provided for alignment.
- [2] Attach each plank to every third joist with two Tek screws into the joist from below with two 1/4" Tek screws per plank.



### **Install Stairs**

- [1] Attach staircase(s) to joist with Two 1/2" x 1-1/2" Hex bolts at hangers.

### **Install Railings**

- [1] Railings are numbered, refer to Key in shipping package. Simply slip them into the receiving tube steel stub-ups and you're done!.

\* All hardware provided by Novia